

TOPSTONE SURFACE STRUCTURES



TopStone Mesh

System functional solutions for unpaved surfaces

Unpaved surfaces,

“Worn pavements”, alleys

Gardens, parks



Affordability

The possibility of application without curbs, easy formability

- The main part of the TopStone Mesh system is the TopMesh product to be used wherever there is a need to increase the flexural strength and flexibility of the TopStone system.
- Suitable for application to unpaved grounds.
- It allows tensile and flexural strength 12 MPa when used with TopMesh reinforcing grids (ITC test report number 412502180/01).
- Expansion gaps every 2 m².

Simple application in 5 steps without technological break!



Subgrade preparation



Installation of geotextile



Laying and compaction of leveling layer



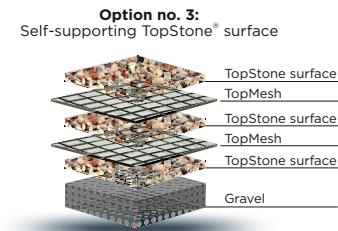
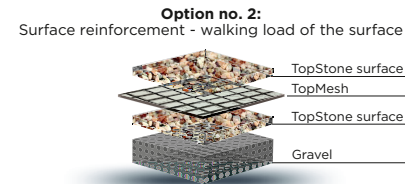
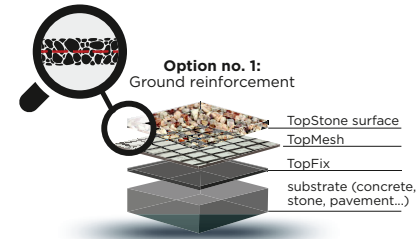
TopMesh application



TopStone stone carpet laying

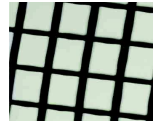


Finished surface TopStone



TopStone systems products:

TopMesh
high quality reinforcing fiberglass mesh with large pitch



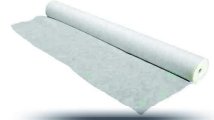
Pack. quantity / roll 200 m²

Hidden curb
curb made of recycled plastic, gray-black colour



Packaging - running meter

Geotextilie
geosynthetics in weight of 200 g / m², gray-white colour



Packaging - m²



Easy formability of the resulting surface.

TOPSTONE SURFACE DETAILS

TOPSTONE MESH - REINFORCEMENT FOR SUBSTRATES WITH PROBLEMATIC SURFACE

Application: sidewalks, driveways, swimming pools, terraces, drip edge ending.

The advantage of this solution is in fast application without the need of formwork or terminal strip, and also in aesthetic appearance, continuous transition to the substrate and TopMesh grid reinforcement in case of laying surfaces on problematic substrates (cracks, older surfaces, tiles etc.).



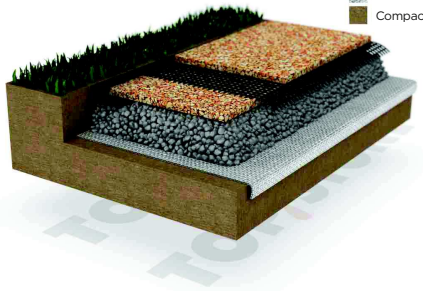
- LEGEND:**
- Substrate (concrete, stone, tiles)
 - TopStone surface
 - TopMesh
 - TopFix priming

SURFACE REINFORCEMENT - WALKING LOAD OF THE SURFACE

Reinforcement of surface with TopMesh grid on substrate.

Application: sidewalks, driveways, swimming pools, terraces, drip edge ending.

The advantage of this solution is in fast application without the need of formwork or terminal strip, and also in aesthetic appearance, continuous transition to the substrate and TopMesh grid reinforcement in case of laying surfaces on problematic substrates (cracks, older surfaces, tiles etc.).



- LEGEND:**
- Hidden curb - plastic
 - TopStone surface
 - TopMesh
 - Compacted crushed stone
 - Geotextile (200 g / m²)
 - Compacted subsoil

SURFACE REINFORCEMENT - SELF-SUPPORTING TOPSTONE SURFACE

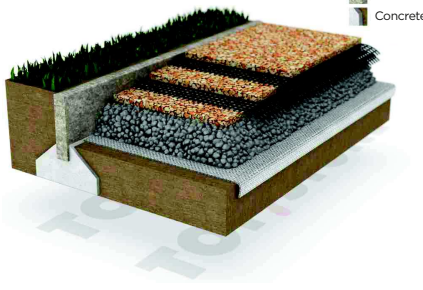
Substrate - compacted subsoil - crushed stone stored on a geotextile.

One option is to terminate the surface with a concrete curb.

Put the reinforcement TopMesh grid between three layers of TopStone surface..

The advantage of this solution is in laying on unpaved surfaces (self-supporting surface).

Can be applied without curbs.



- LEGEND:**
- TopStone surface
 - TopMesh
 - Compacted crushed stone
 - Geotextile (200 g / m²)
 - Compacted subsoil
 - Concrete curb
 - Concrete curb bed